

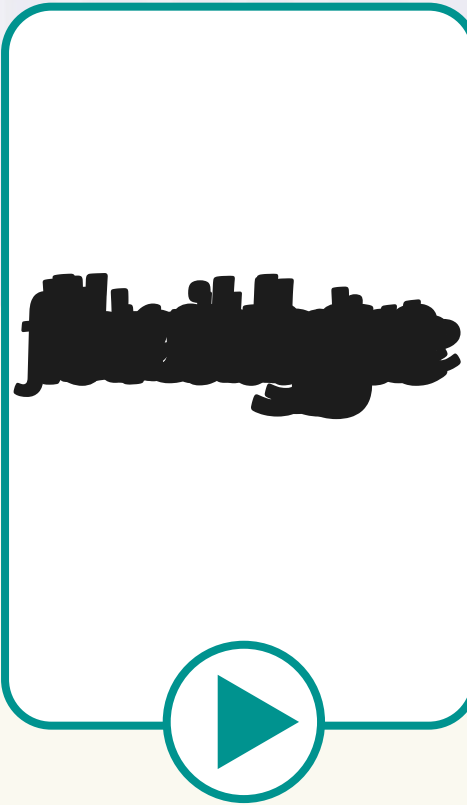


dge and ge saying /j/

The Rescue



Let's practise reading some of this week's focus words.



Now, let's write them on a whiteboard or paper.



edge

Now, let's write them on a whiteboard or paper.



hedge

Now, let's write them on a whiteboard or paper.



badge

Now, let's write them on a whiteboard or paper.



bridge

This word is one of our Common Exception Words. Which part of the word do you think is the tricky part? You could write the tricky bit in a different colour or underline it. Remember to say the letter names as you write them.



bought

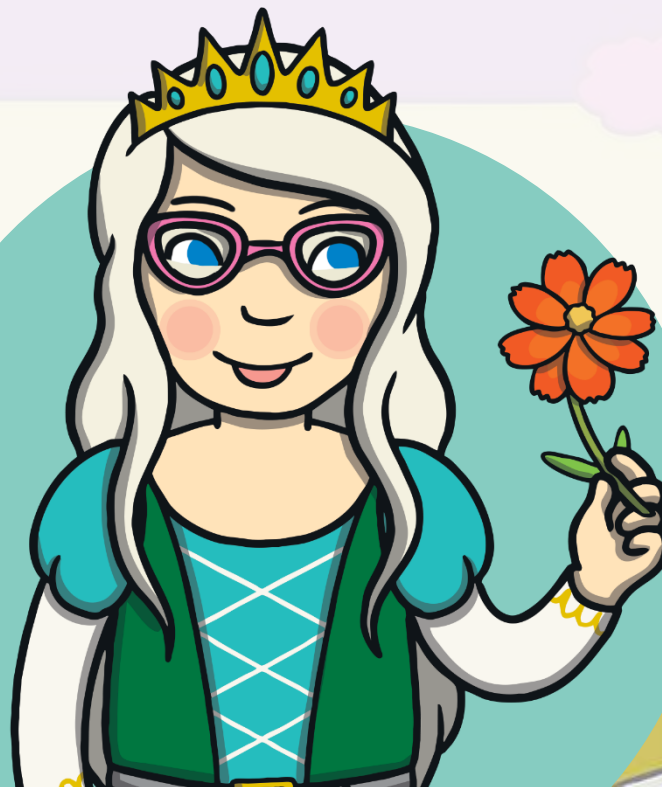
This word is one of our Common Exception Words. Which part of the word do you think is the tricky part? You could write the tricky bit in a different colour or underline it. Remember to say the letter names as you write them.

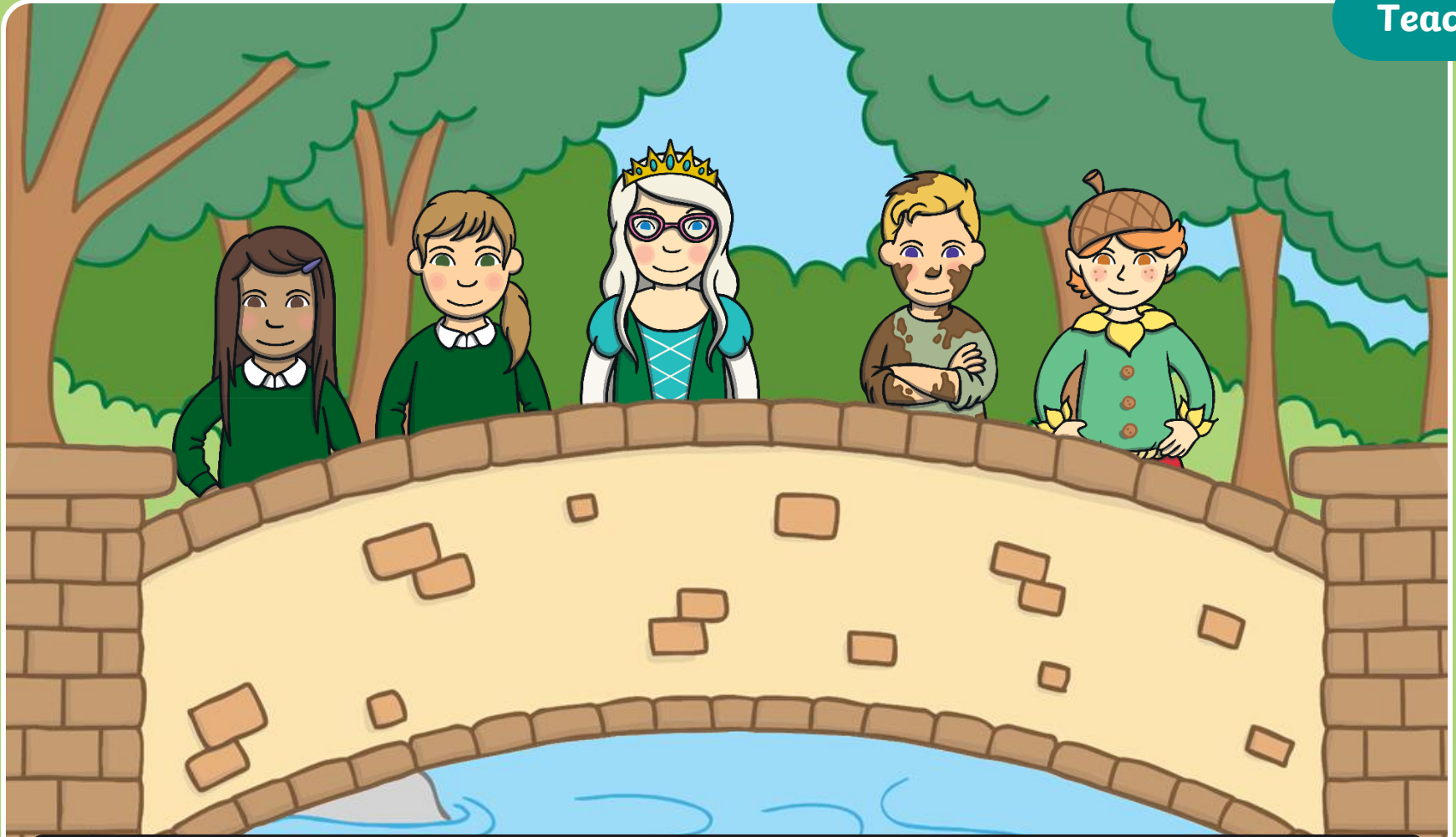


favourite

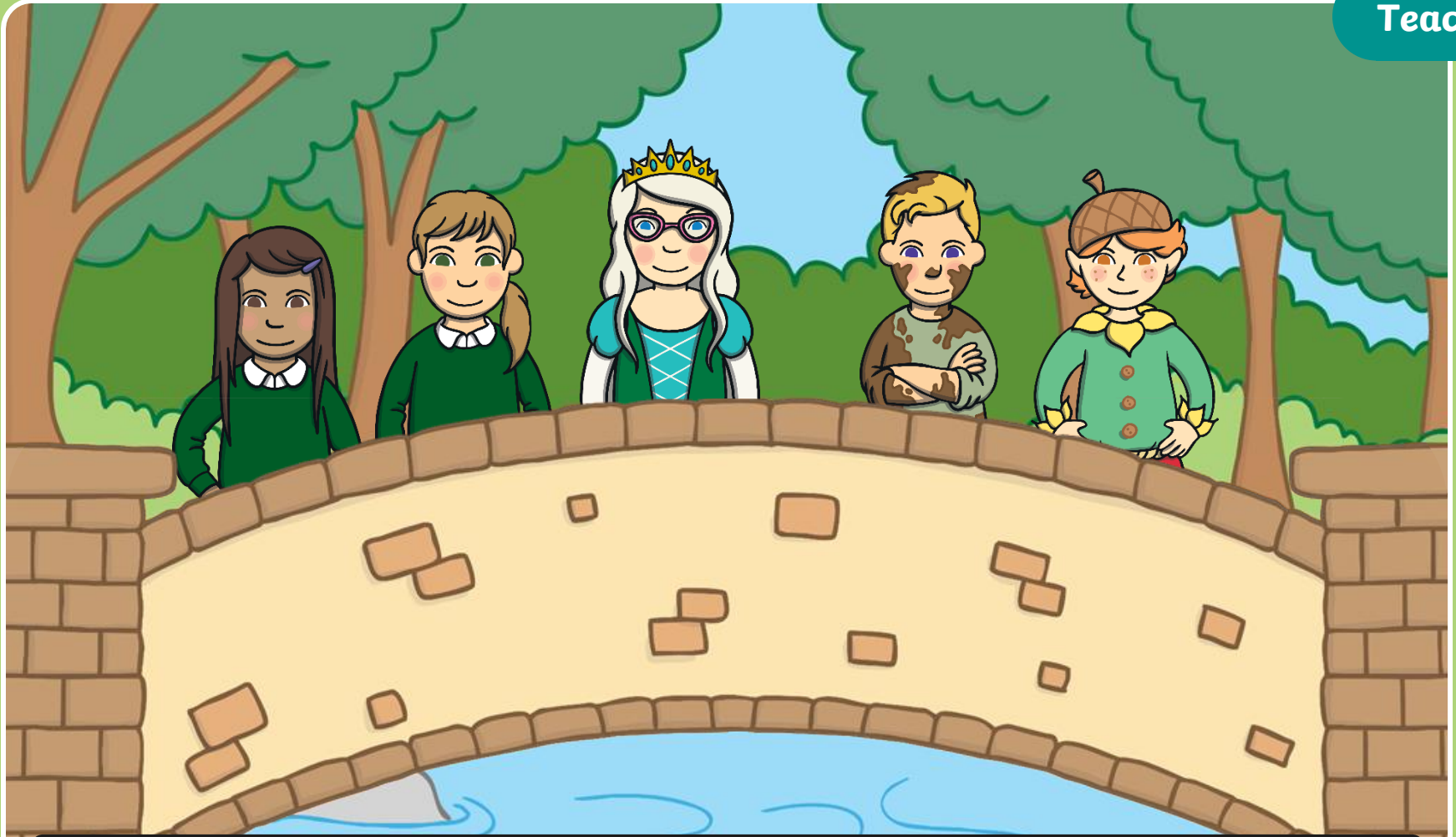
Today, we are learning to write a sentence containing words with the /j/ sound.

We are also learning to use a capital letter for names of people and places.





Grime had appeared to show Sam, Lily, Gabi and Sarge where to find the large orange flower that the troll wanted in exchange for Prince Ash and his golden badge.



“The badge is so bright and gold that it keeps the river mosquitoes away,” explained Grime. “They really annoy the troll and make him cross.”



“Ah, so the bright orange flower will do the same job!” said Lily.
“That’s right,” said Grime, leading the way. “Come on, the flower is not far and it has a strong smell.”

Who is searching for the flower?



Sam



Gabi



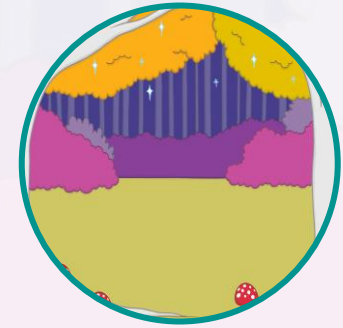
Lily



Grime



Sarge




Enchanted
Forest

When we write someone's name or the name of place, the first letter is always a capital.

Names of people or places are called proper nouns. Words of things like 'chair' or 'book' don't need a capital letter. These things are called common nouns.

Capital Corrections

Gabi has been writing some sentences about the adventure so far. Can you help correct her sentences to make sure she has used capital letters for names correctly? Use Sarge's alphabet arc to help you.



This is a great whiteboard activity
which could be done individually
or in pairs!



Click me for Kit's teaching tips!

lily turned into a princess in the enchanted forest.
Lily turned into a princess in the Enchanted Forest.



Check



Next, sarge gave lily, gabi and sam a challenge.
Next, Sarge gave Lily, Gabi and Sam a challenge.



Check

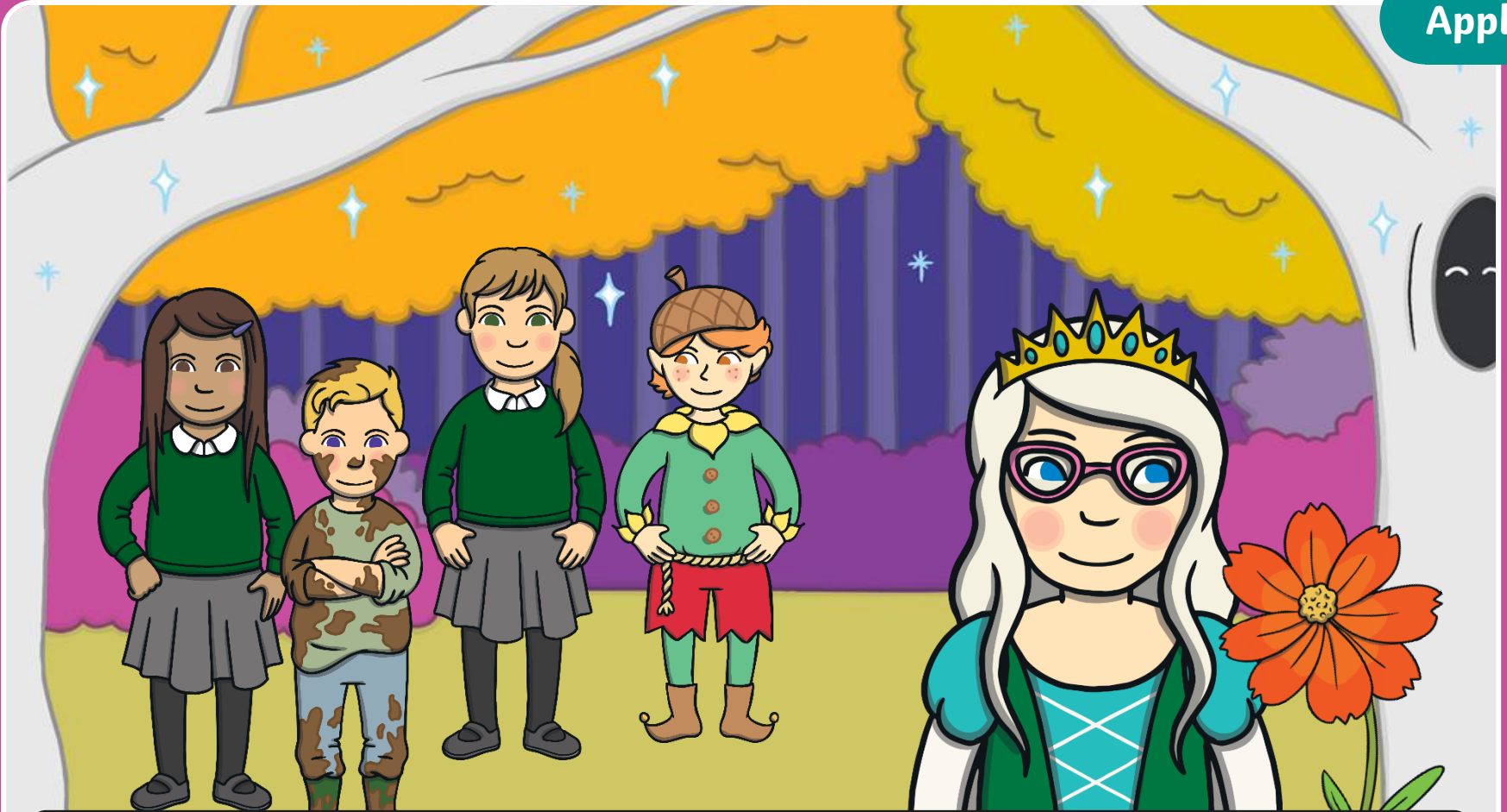


It was grime that told lily where the orange flower was.
It was Grime that told Lily where the orange flower was.



Check





They soon found the large orange flower at the edge of the forest. It smelt wonderful.

“Now to find the troll and Prince Ash,” said Sarge.

“I think I can hear them!” said Lily. “This way.”



They found Prince Ash and the troll. “Thank you,” said the troll, as Lily gave him the flower. He happily went back to his bridge, leaving Prince Ash behind. Prince Ash looked very relieved.

Sentence Scribers

Help Gabi to write about her adventure. Listen and write down the sentences. Remember to start each name with a capital letter.

Observe if the children use and spell this week's focus words or common exception words correctly in the sentences.



Click me for Kit's teaching tips!

Lily found the
large orange
flower.

Play



Show Sentence



They found
Prince Ash at
the edge of the
forest.

Play

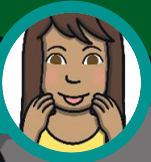


Show Sentence



The troll went
home to his
bridge.

Play



Show Sentence





Gabi, Sam and
Lily had fun
on their
challenge.

Play



Show Sentence



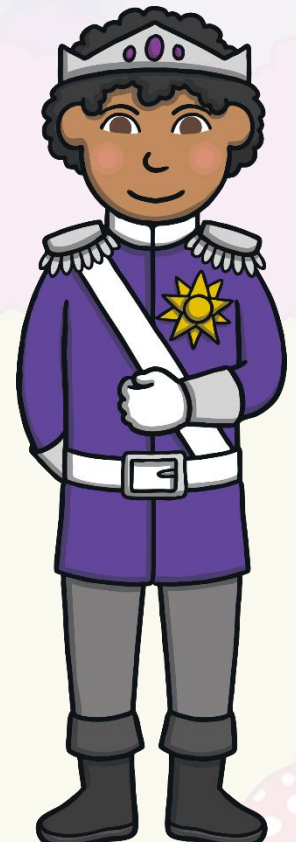


“You really are a true and brave princess to have succeeded in the challenge,” said Prince Ash admiringly. Sam and Gabi smiled and then so did Lily. “Well... I couldn’t have done it without my brave friends,” she said.

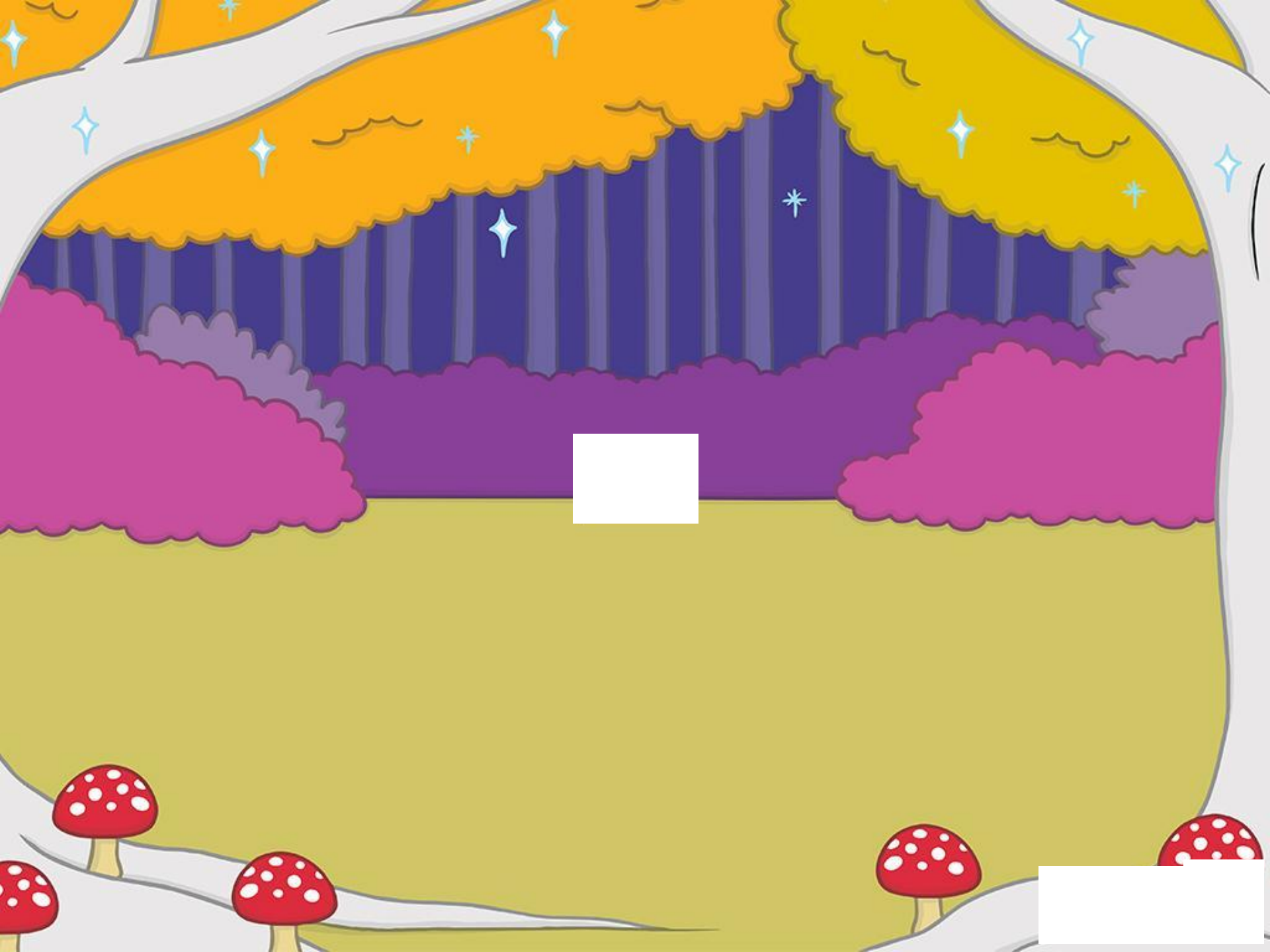
Today, we have learnt...



dge and ge
saying /j/



We have also learnt to use a capital letter at the start of a name.



Check and Change



Level 6

Check Gabi's sentences. She needs some help for words with the /j/ sound. Can you write the missing letters of the words for her? Has she used a capital letter at the start of every name? If you spot a mistake, circle it and write your correction above the word.

Sam, gabi and lily had to help Prince ash. They found a note on the bri____. The troll gave them a challen____. They had to get a lar____, oran____, flower and exchan____ it for Prince ash and his ba____. The troll said that only a princess could succeed in the challenge. The flower was at the e____ of the forest. The troll went back to his bri_____.

Challenge

What do you think happens next? Write some sentences to continue the story. Try to include as many of this week's focus words as you can. Remember to use a capital letter at the start of every name.
